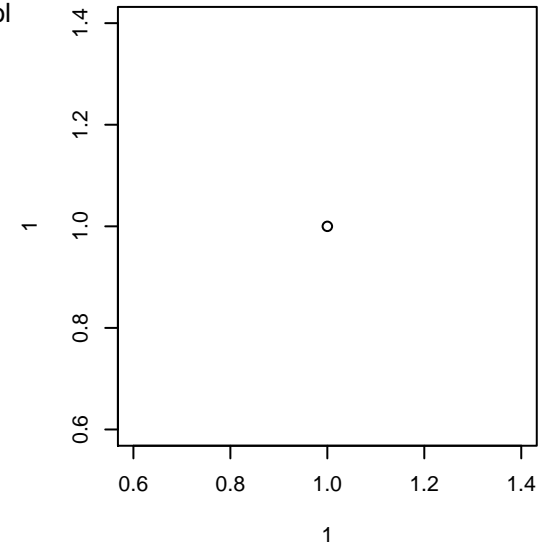


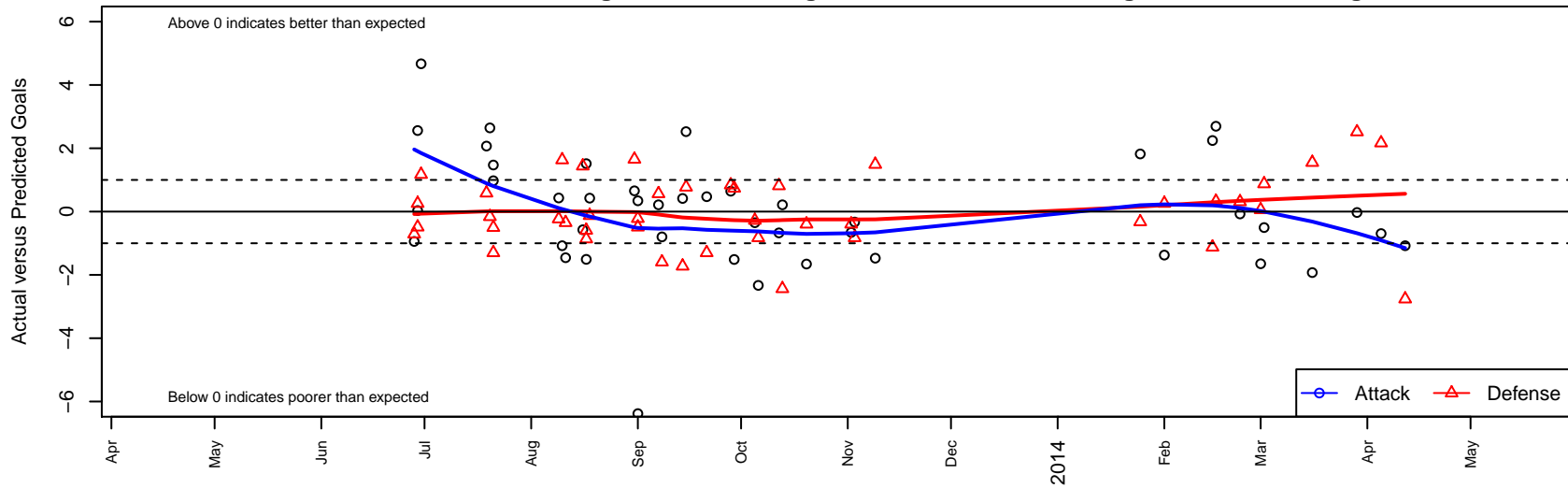
Washington Timbers Green B99

Washington Timbers
 Vancouver, WA
 B99 total strength=1191
 attack=4.95 defense=3.03
 fall league = OPL First Division U14, OPL Direc
 alt names used:
 Washington Timbers FC B99 Green
 WTFC B99 Green
 Washington Timbers BU99 Green
 WTFC Green B99
 WA Timbers FC Green
 Washington Timbers B99 Green
 Washington Timbers 99B Green B

Venues played:
 Clash At the Border Silver/Bronze/Copper Pool
 Clash At the Border Copper U14
 Beaverton Cup BU14 Silver
 Chinook Cup Gold U14
 Mt Hood Challenge BU14 Gold
 Labor Day Cup BU14
 OPL First Division U14
 OPL Directors Cup Gold U14
 Spr RCL B99 Div 5
 Challenge Cup B99 Division 1 – Challenge 1



Washington Timbers Green B99
 Dots are actual minus expected GF (blue circles) and GA (red triangles).
 Blue line is smoothed change in attack strength. Red is smoothed change in defense strength.



	date	home		away		venue	pred.home	pred.away
26101	2014-04-12	Westsound FC Red B99	6	Washington Timbers Green B99	0	Challenge Cup B99 Division 1 – Challenge 1	3.24	1.08
25743	2014-04-05	Washington Timbers Green B99	0	WPFC White B99	1	Challenge Cup B99 Division 1 – Challenge 1	0.69	3.17
25483	2014-03-29	Eastside FC White B99	0	Washington Timbers Green B99	1	Challenge Cup B99 Division 1 – Challenge 1	2.52	1.03
25044	2014-03-16	Seattle United Samba B99	0	Washington Timbers Green B99	0	Spr RCL B99 Div 5	1.55	1.93
23776	2014-03-02	Washington Timbers Green B99	4	PacNW White B99	0	Spr RCL B99 Div 5	4.50	0.88
23597	2014-03-01	Washington Timbers Green B99	3	Westsound FC Black B99	1	Spr RCL B99 Div 5	4.65	1.06
23323	2014-02-23	Washington Timbers Green B99	5	Snohomish United Red B99	1	Spr RCL B99 Div 5	5.07	1.31
22724	2014-02-16	FWFC White B99	0	Washington Timbers Green B99	12	Spr RCL B99 Div 5	0.32	9.30
22546	2014-02-15	Washington Timbers Green B99	7	SSC Shadow B B99	2	Spr RCL B99 Div 5	4.75	0.88
22071	2014-02-01	NWN White B99	0	Washington Timbers Green B99	8	Spr RCL B99 Div 5	0.26	9.37
21776	2014-01-25	Slammers White B99	1	Washington Timbers Green B99	6	Spr RCL B99 Div 5	0.68	4.18
17836	2013-11-09	Washington Timbers Green B99	1	United SA Potros B99	0	OPL Directors Cup Gold U14	2.47	1.49
17292	2013-11-03	Washington Timbers Green B99	2	PCU Red B99	2	OPL Directors Cup Gold U14	2.33	1.17
16908	2013-11-02	Thelo Pride B99	3	Washington Timbers Green B99	1	OPL Directors Cup Gold U14	2.60	1.66
15386	2013-10-20	Washington Timbers Green B99	0	Thelo Pride B99	3	OPL First Division U14	1.66	2.60
14440	2013-10-13	Washington Timbers Green B99	3	Newberg SC Dragons B99	4	OPL First Division U14	2.79	1.56
14058	2013-10-12	Washington Timbers Green B99	2	NEU Benfica B99	0	OPL First Division U14	2.67	0.81
13389	2013-10-06	PCU Red B99	2	Washington Timbers Green B99	0	OPL First Division U14	1.17	2.33
13039	2013-10-05	HSC Fury B99	3	Washington Timbers Green B99	1	OPL First Division U14	2.72	1.35
12382	2013-09-29	Crossfire Oregon Green II B99	0	Washington Timbers Green B99	1	OPL First Division U14	0.74	2.51
12070	2013-09-28	Washington Timbers Green B99	3	FC Portland White B99	1	OPL First Division U14	2.36	1.84
11138	2013-09-21	Washington Timbers Green B99	3	Westside Timbers Copa TS B99	3	OPL First Division U14	2.53	1.70
10501	2013-09-15	ETFC Celtic Red –was White B99	0	Washington Timbers Green B99	6	OPL First Division U14	0.77	3.47
10163	2013-09-14	Washington Timbers Green B99	2	Pacific FC Union B99	4	OPL First Division U14	1.58	2.28
9542	2013-09-08	Eastside Timbers Black B99	3	Washington Timbers Green B99	2	OPL First Division U14	1.41	2.80
9214	2013-09-07	Newberg SC Dragons B99	1	Washington Timbers Green B99	3	OPL First Division U14	1.56	2.79
8705	2013-09-01	Washington Timbers Green B99	1	FC Alliance A B99	3	Labor Day Cup BU14	0.66	2.78
8712	2013-09-01	KYSA Real Kent B99	1	Washington Timbers Green B99	0	Labor Day Cup BU14	0.51	6.38

	date	home		away		venue	pred.home	pred.away
3591	2013-08-31	Fusion FC 2001B	1	Washington Timbers Green B99	3	Labor Day Cup BU14	2.65	2.34
528	2013-08-18	Blackhills FC Black B99	3	Washington Timbers Green B99	2	Mt Hood Challenge BU14 Gold	2.87	1.58
7191	2013-08-17	Boise Nationals Chelsea B99	3	Washington Timbers Green B99	3	Mt Hood Challenge BU14 Gold	2.14	1.49
7214	2013-08-17	PacNW Blue B99	3	Washington Timbers Green B99	0	Mt Hood Challenge BU14 Gold	2.41	1.51
870	2013-08-16	Corvallis United Reign B99	0	Washington Timbers Green B99	2	Mt Hood Challenge BU14 Gold	1.44	2.57
3517	2013-08-11	Washington Timbers Green B99	0	LASC Chelsea B99	3	Chinook Cup Gold U14	1.46	2.65
3233	2013-08-10	Washington Timbers Green B99	0	Westside Timbers Samba B99	3	Chinook Cup Gold U14	1.08	4.63
3946	2013-08-09	Eastside Timbers Red B99	4	Washington Timbers Green B99	1	Chinook Cup Gold U14	3.77	0.57
1260	2013-07-21	Washington Timbers Green B99	4	Westside Timbers Copa TS B99	3	Beaverton Cup BU14 Silver	2.53	1.70
1267	2013-07-21	Washington Timbers Green B99	4	Albany FC Arsenal B99	2	Beaverton Cup BU14 Silver	3.02	1.50
837	2013-07-20	Washington Timbers Green B99	5	FC Portland White B99	2	Beaverton Cup BU14 Silver	2.36	1.84
3461	2013-07-19	BSC Portland Gold B99	0	Washington Timbers Green B99	8	Beaverton Cup BU14 Silver	0.58	5.93
3472	2013-06-30	PCU Red B99	0	Washington Timbers Green B99	7	Clash At the Border Copper U14	1.17	2.33
3308	2013-06-29	Vancouver West FC United B99	2	Washington Timbers Green B99	3	Clash At the Border Silver/Bronze/Copper Pool U14	1.51	2.97
3318	2013-06-29	PCU Black B99	0	Washington Timbers Green B99	14	Clash At the Border Copper U14	0.26	11.44
3151	2013-06-28	Washington Timbers Green B99	0	Delta Selects 2000B	4	Clash At the Border Silver/Bronze/Copper Pool U14	0.94	3.29